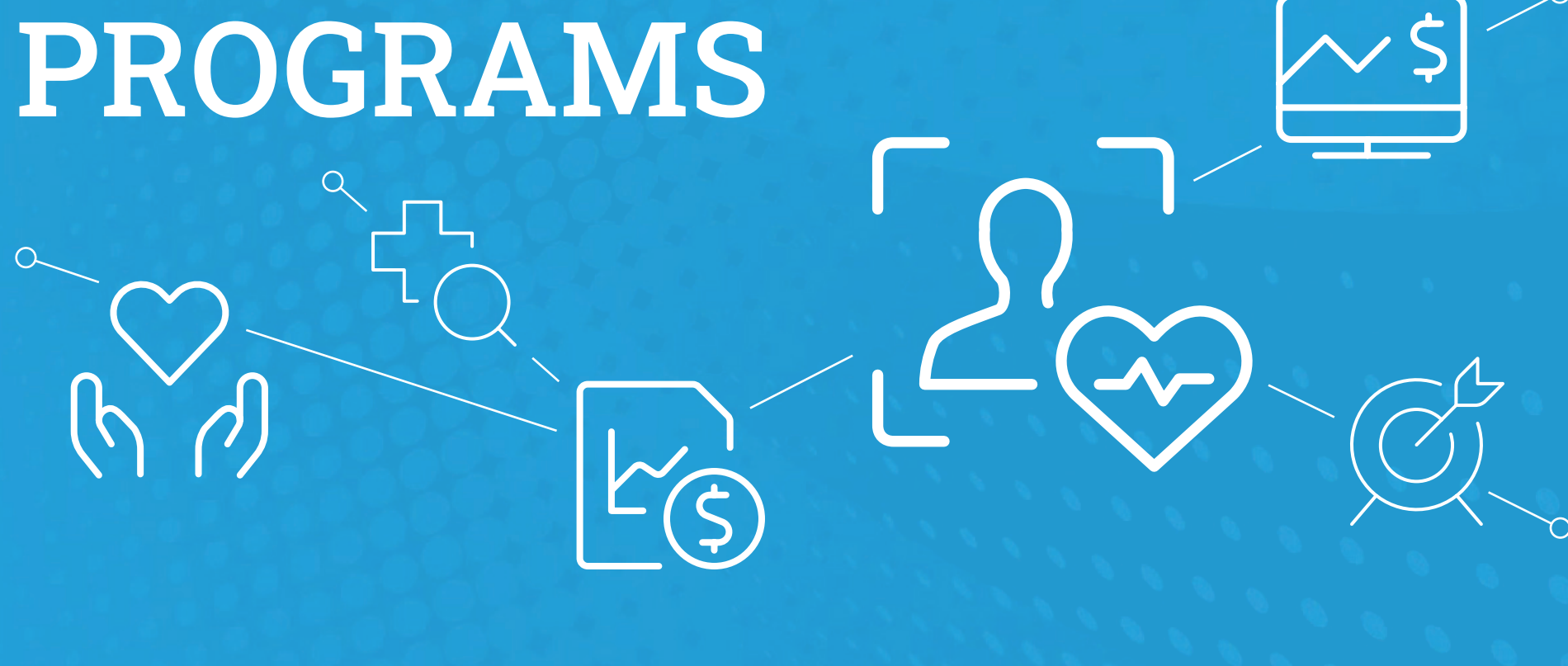
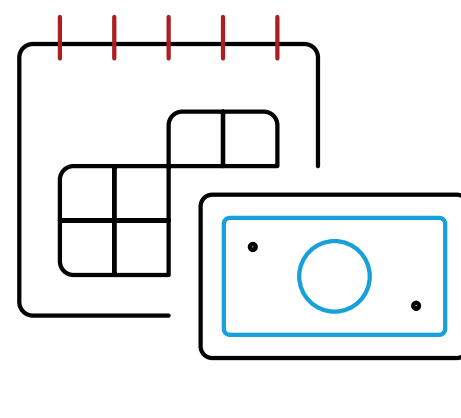
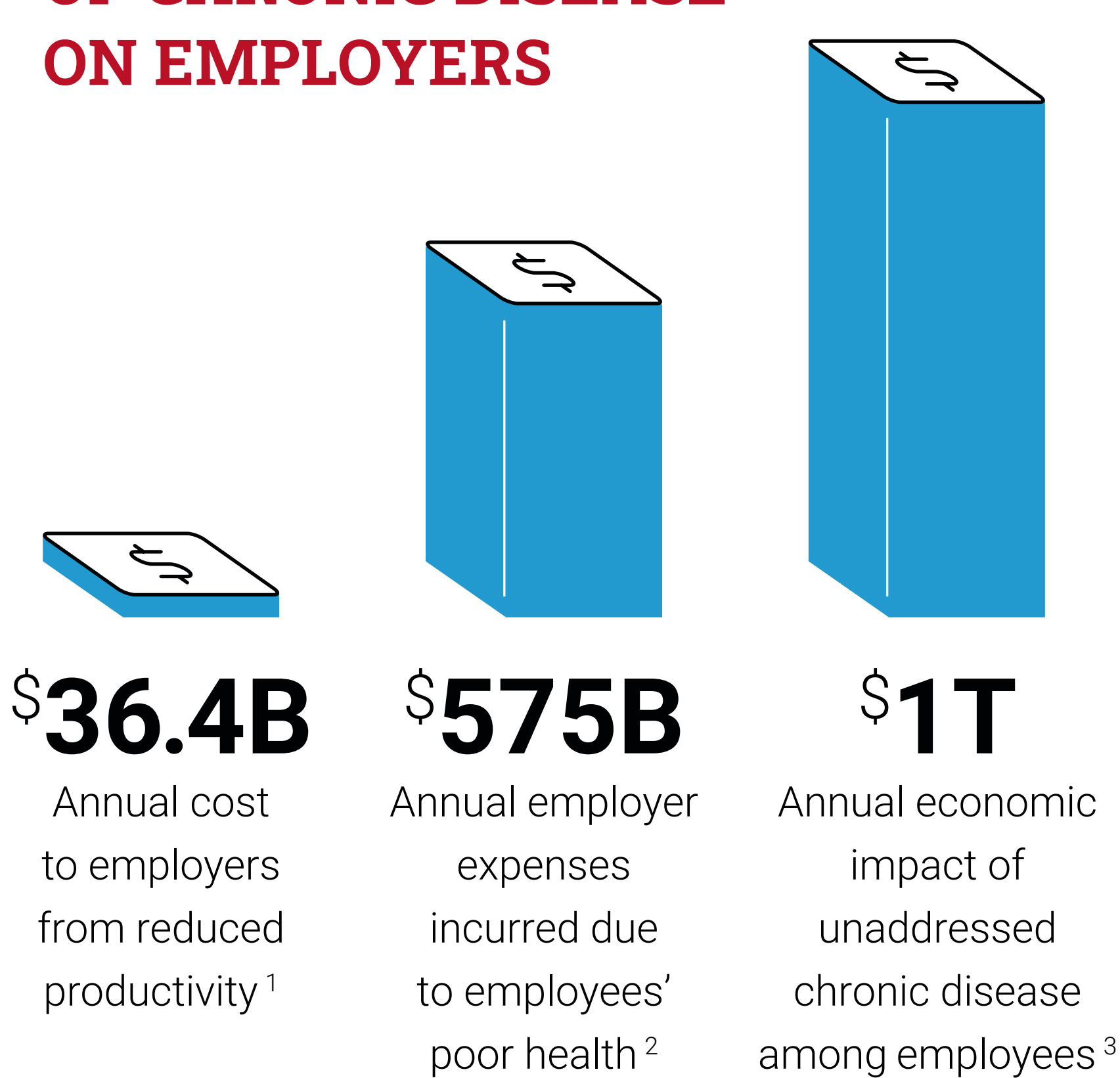


THE VALUE OF STAND-ALONE CARE MANAGEMENT PROGRAMS



Chronic conditions are a leading driver of employer healthcare costs. Because most ASO and TPA care management programs are bundled within larger offerings, isolating and calculating impact is nearly impossible. In other words, they have no accountability or incentive to drive results. There's a better way.

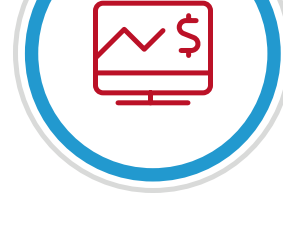
FINANCIAL IMPACT OF CHRONIC DISEASE ON EMPLOYERS



THE NUMBER OF INDIVIDUALS SPENDING >\$100K EACH YEAR

on medical care rose 50% between 2013 and 2021.⁴

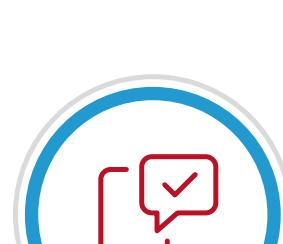
Why Stand-Alone Care Management Programs are Better



Hyper-focused on **IMPROVING OUTCOMES AND LOWERING COSTS**



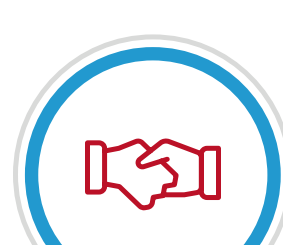
Customized for each member's **UNIQUE HEALTHCARE NEEDS AND GOALS**



PROACTIVE AND ONGOING OUTREACH, especially to high-risk members



HIGHLY DETAILED ANALYSIS to improve transparency and accountability



WORK CLOSELY with stop-loss carriers

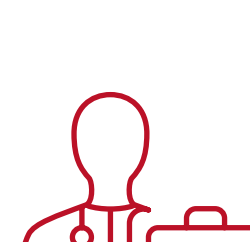


Payment model **TIED TO OUTCOMES AND RESULTS**



UNCOUPLED FROM BENEFIT/PROVIDER RATE CHANGES

With Conifer Health's Care Management Program, Employers Have Achieved the Following:



34%

drop in the number of individuals seeing more than 15 providers



35%

decrease in individuals with more than 4 ER visits over 12 months



12%

decrease in individuals having more than 9 physicians writing prescriptions

In the next five years, more than a quarter of the U.S. workforce will be 55 or older. Since older adults typically have more chronic conditions, employer healthcare costs will likely increase. Conifer Health can help. Conifer's tailored solutions are designed around transparency and incentives tied to delivering results. Employers benefit through improved outcomes and lower costs.

CARE FOR POPULATIONS, ONE PERSON AT A TIME.

Learn more at [ConiferHealth.com](https://www.coniferhealth.com)

¹ <https://www.fightchronicdisease.org/latest-news/milken-institute-study-chronic-disease-costs-us-economy-more-1-trillion-annually>

² <https://www.cdc.gov/chronicdisease/resources/publications/factsheets/workplace-health.htm>

³ <https://www.healthleadersmedia.com/finance/employees-poor-health-cost-employers-575b-2019>

⁴ https://www.ebri.org/docs/default-source/fast-facts/ff-461-highcostclaimants2-30mar23.pdf?sfvrsn=f89d392f_2